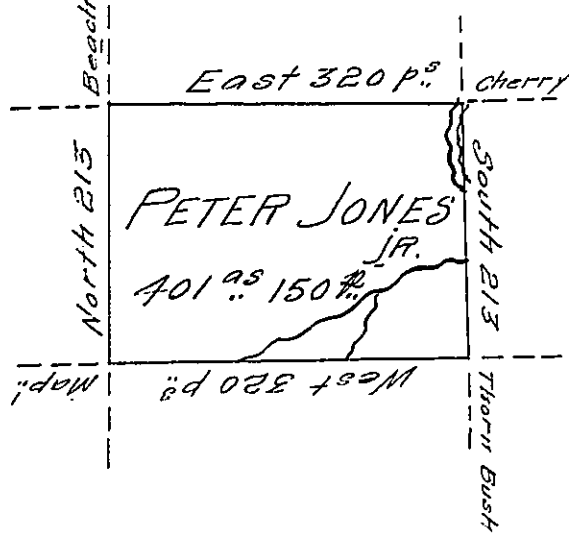


Rachel Jones

John Jones



Elisha Ashbel

Jacob Graff

Situate on the West side of French Creek in Allegheny County Containing 401<sup>p.s.</sup> 150<sup>p.s.</sup> and Allowance of Six <sup>p.s.</sup> Cent for Roads &c. Surveyed the 20<sup>th</sup> day of oct<sup>r</sup>. 1795 In pursuance of his Improvement Bearing date the 19<sup>th</sup> day of April 1794

W<sup>m</sup> Power D<sup>y</sup>. Sr.

To Dan<sup>l</sup>. Brodhead Esq<sup>r</sup>.  
Surveyor General

IN TESTIMONY that the above is a copy of the original remaining on file in the Department of Internal Affairs of Pennsylvania, made conformably to an Act of Assembly approved the 16th day of February, 1833, I have hereunto set my Hand and caused the Seal of said Department to be affixed at Harrisburg, this thirteenth day of September 1906

*Isaac D. Brown*  
Secretary of Internal Affairs.